



SCOTTISHPOWER
RENEWABLES

East Anglia ONE North and East Anglia TWO Offshore Windfarms

LVIA GIS Addendum

Appendix 3 Viewpoint 3: Figure 29.15
GIS Update: Grove Road, near Pear
Tree Farm

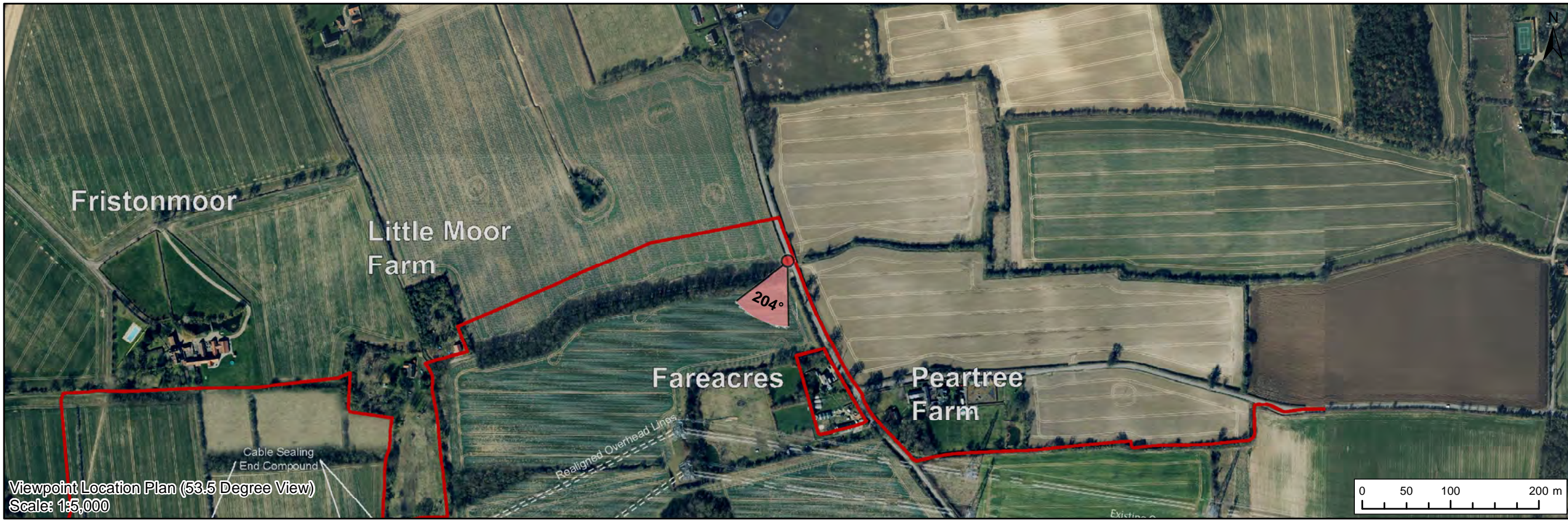
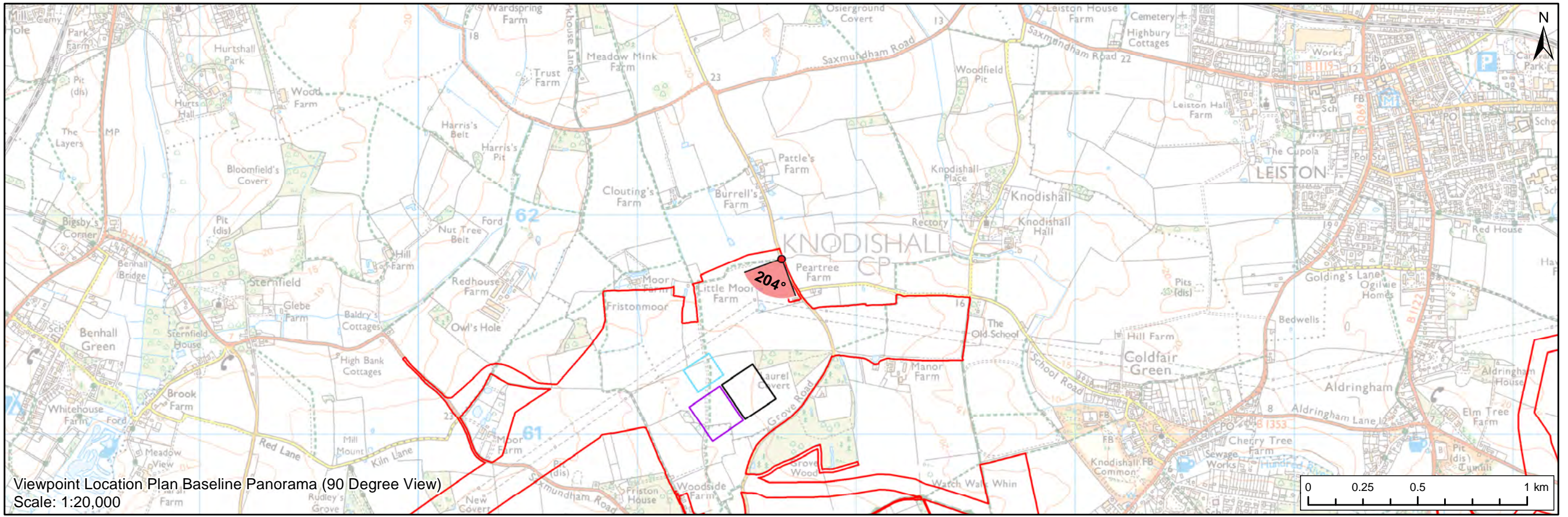
Applicants: East Anglia ONE North Limited and East Anglia TWO Limited
Document Reference: ExA.AS-4.D11.V1_03
SPR Reference: EA1N_EA2-DWF-ENV-REP-IBR-001074_03

Date: 7th June 2021

Revision: Version 1

Author: Royal HaskoningDHV

Applicable to East Anglia ONE North and East Anglia TWO



Legend

- East Anglia ONE North and East Anglia TWO Onshore Development Area
- Western Substation (190m x 170m)
- Eastern Substation (190m x 170m)
- Indicative National Grid GIS Substation Location

Viewpoint:

- ▲ 90 Degree Field of View Viewpoint
- ▼ 53.5 Degree Field of View Viewpoint



Rev	Date	By	Comment	Approved:
2	07/06/2021	TH	Second Issue (OPEN)	Prepared: TH
1	25/03/2021	LA	First Issue (OPEN)	Checked: SM
				Approved: LT

Scale @ A3

Source: © Crown copyright and database right 2020. Ordnance Survey 100031970.
This map has been produced to the latest known information at the time of issue, and has been produced for your information only. Please consult with the SPN Onshore GIS team to ensure the content is still correct before using the information contained on this map. In the field, errors permitted by law, we accept no responsibility or liability, whether in contract, tort (including negligence) or otherwise in respect of any errors or omissions in the information contained in the map and shall not be liable for any loss, damage or expense caused by such errors or omissions.

East Anglia ONE North and East Anglia TWO		(Figure 29.15 - GIS Update)	
Rev	D11	Date	07/06/21
Figure	29.15a	Coordinate System:	BNG Datum: OSGB36



Baseline Photograph (53.5 Degree Field of View)

View flat at a comfortable arm's length

OS reference: 641657 E 261801 N
Eye level: 24 m AOD
Direction of view: 204°

Horizontal field of view: 53.5° (planar projection)
Principal viewing distance: 812.5 mm
Paper size: 841 x 297 mm (half A1)
Correct printed image size: 820 x 260 mm

Camera: Canon EOS 5D Mark II
Lens: 50mm (Canon EF 50mm f/1.4)
Camera height: 1.5 m AGL
Date and time: 22/02/2019, 10:22:33

Contains Ordnance Survey digital data © Crown copyright, All rights reserved 2020 Licence number 0100031673

Figure: 29.15a
Viewpoint 3: Grove Road, near Pear Tree Farm



Visual representation of 1st year of operational phase
 Photomontage of the proposed western substation and National Grid GIS substation

View flat at a comfortable arm's length

OS reference:	641657 E 261801 N	Horizontal field of view:	53.5° (planar projection)	Camera:	Canon EOS 5D Mark II
Eye level:	24 m AOD	Principal viewing distance:	812.5 mm	Lens:	50mm (Canon EF 50mm f/1.4)
Direction of view:	204°	Paper size:	841 x 297 mm (half A1)	Camera height:	1.5 m AGL
		Correct printed image size:	820 x 260 mm	Date and time:	22/02/2019, 10:22:33

Contains Ordnance Survey digital data © Crown copyright, All rights reserved 2020 Licence number 0100031673

Figure: 29.15b
Viewpoint 3: Grove Road, near Pear Tree Farm



Visual representation of 15th year of operational phase
Photomontage of the proposed western substation and National Grid GIS substation

View flat at a comfortable arm's length

OS reference: 641657 E 261801 N
Eye level: 24 m AOD
Direction of view: 204°

Horizontal field of view: 53.5° (planar projection)
Principal viewing distance: 812.5 mm
Paper size: 841 x 297 mm (half A1)
Correct printed image size: 820 x 260 mm

Camera: Canon EOS 5D Mark II
Lens: 50mm (Canon EF 50mm f/1.4)
Camera height: 1.5 m AGL
Date and time: 22/02/2019, 10:22:33

Contains Ordnance Survey digital data © Crown copyright, All rights reserved 2020 Licence number 0100031673

Figure: 29.15c
Viewpoint 3: Grove Road, near Pear Tree Farm



Visual representation of 1st year of operational phase
 Photomontage of the proposed eastern substation and National Grid GIS substation

View flat at a comfortable arm's length

OS reference:	641657 E 261801 N	Horizontal field of view:	53.5° (planar projection)	Camera:	Canon EOS 5D Mark II
Eye level:	24 m AOD	Principal viewing distance:	812.5 mm	Lens:	50mm (Canon EF 50mm f/1.4)
Direction of view:	204°	Paper size:	841 x 297 mm (half A1)	Camera height:	1.5 m AGL
		Correct printed image size:	820 x 260 mm	Date and time:	22/02/2019, 10:22:33

Contains Ordnance Survey digital data © Crown copyright, All rights reserved 2020 Licence number 0100031673

Figure: 29.15b
Viewpoint 3: Grove Road, near Pear Tree Farm



Visual representation of 15th year of operational phase
Photomontage of the proposed eastern substation and National Grid GIS substation

View flat at a comfortable arm's length

OS reference: 641657 E 261801 N
Eye level: 24 m AOD
Direction of view: 204°

Horizontal field of view: 53.5° (planar projection)
Principal viewing distance: 812.5 mm
Paper size: 841 x 297 mm (half A1)
Correct printed image size: 820 x 260 mm

Camera: Canon EOS 5D Mark II
Lens: 50mm (Canon EF 50mm f/1.4)
Camera height: 1.5 m AGL
Date and time: 22/02/2019, 10:22:33

Contains Ordnance Survey digital data © Crown copyright, All rights reserved 2020 Licence number 0100031673

Figure: 29.15c
Viewpoint 3: Grove Road, near Pear Tree Farm



Visual representation of 1st year of operational phase
 Photomontage of the proposed western substation, eastern substation and National Grid GIS substation

View flat at a comfortable arm's length

OS reference:	641657 E 261801 N	Horizontal field of view:	53.5° (planar projection)	Camera:	Canon EOS 5D Mark II
Eye level:	24 m AOD	Principal viewing distance:	812.5 mm	Lens:	50mm (Canon EF 50mm f/1.4)
Direction of view:	204°	Paper size:	841 x 297 mm (half A1)	Camera height:	1.5 m AGL
		Correct printed image size:	820 x 260 mm	Date and time:	22/02/2019, 10:22:33

Contains Ordnance Survey digital data © Crown copyright, All rights reserved 2020 Licence number 0100031673

Figure: 29.15d
Viewpoint 3: Grove Road, near Pear Tree Farm



Visual representation of 15th year of operational phase
Photomontage of the proposed western substation, eastern substation and National Grid GIS substation

View flat at a comfortable arm's length

OS reference:	641657 E 261801 N	Horizontal field of view:	53.5° (planar projection)	Camera:	Canon EOS 5D Mark II
Eye level:	24 m AOD	Principal viewing distance:	812.5 mm	Lens:	50mm (Canon EF 50mm f/1.4)
Direction of view:	204°	Paper size:	841 x 297 mm (half A1)	Camera height:	1.5 m AGL
		Correct printed image size:	820 x 260 mm	Date and time:	22/02/2019, 10:22:33

Contains Ordnance Survey digital data © Crown copyright, All rights reserved 2020 Licence number 0100031673

Figure: 29.15e
Viewpoint 3: Grove Road, near Pear Tree Farm